



EO/IR Camara



Loudspeaker



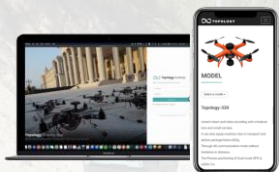
warning lamp



Cargo Drop



Ground Station



WEB GCS (Topology)



HJ-X9G100 Helicopter

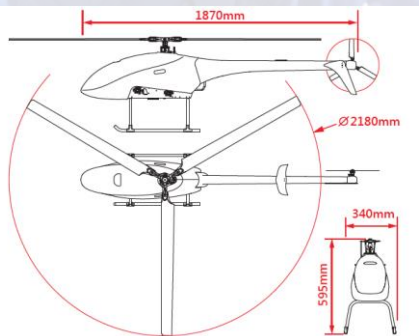
Spec.	HJ-X9G100	Spec.	HJ-X9G100
大小(展開)(cm)	218*34*60	空重 (Without Payload)	11 kg
酬載能力 (kg)	10Kg	Power	98無鉛汽油 With 100W發電機
起飛重量(kg)	24.5Kg	最大航高	4000M
飛行時間(min)	3HR(一般) 6HR(副油箱)	最大飛行半徑	60KM
最大飛行速度(km/hr)	108	旋轉速度 (degree/s)	60
爬升率(m/s)	5M/s	抗風係數 (Wind/rainfall)	Beaufort 蒲伏風級LEVEL 9
下降率 (m/s)	2M/s		

全機最大起飛重量:24.5kg



主旋翼舵面的控制由全金屬高精度十字盤連桿機構搭配三個全金屬高扭力數位伺服機進行

使用大模數齒輪傳動,搭配全金屬渦形尾傘齒,增強可靠度及耐用性
電源控制使用自主100W/12V直流發電機以對應機體之超長航時全自動引擎啟動系統,不需以手發等多餘程序啟動,只需設定撥桿即可於地面站或遙控器直接發動。



TEL: +886-03-5734260 Mobile: +886935811226(Tony Chang)

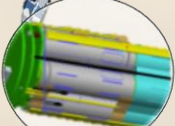
Mail: dalin@arklab.tw Web: www.hjuavs.com

No. 326, Sec. 2, Gongdao 5th Rd., East Dist., Hsinchu City 300043, Taiwan (R.O.C.)





Spec.	ATG Duo	Spec.	ATG Duo
Length(cm)	40*40*55	Tare (Without Payload)	1.8 kg
Payload (kg)	1.5 Kg	Power	Battery 4S 8000 mah
Take Off Weight (kg)	5Kg	Maximum Hight	3500M
Cruise Time(min)	35 min	Maximum Range(M)	15KM
Maximum Speed (km/hr)	72 KPH	Turning rate (degree/s)	100
Climbing Rate(m/s)	6M/s	Operating Environment (Wind/rainfall)	Beaufort LEVEL 6
Landing Speed (m/s)	6M/s		

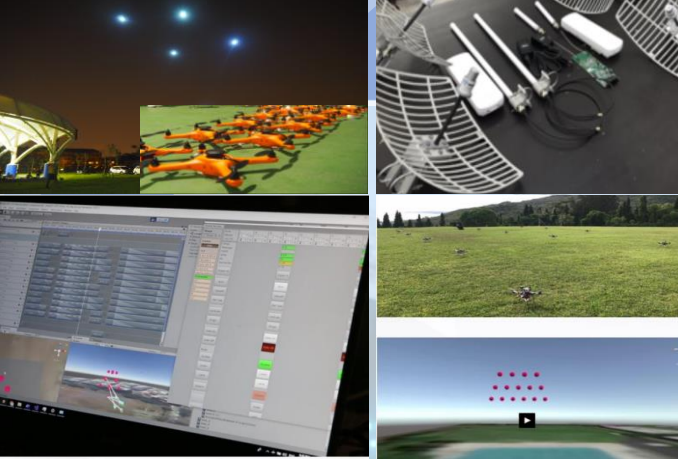


Smart Battery

Edge AI Board

Redundant IMU

HJ-ATG Duo-(



2D/3D Drone Show Editor

Spec.	Firefly	Spec.	Firefly
Length(cm)	29*29*18 (Notes)	Tare (Without Payload)	1.3 kg
Payload (kg)	0.6 Kg	Power	Battery 4S 4200 mah
Take Off Weight (kg)	3Kg	Maximum Hight	3000M
Cruise Time(min)	25 min	Maximum Range(M)	10KM
Maximum Speed (km/hr)	60KPH	Turning rate (degree/s)	120
Climbing Rate(m/s)	5M/s	Operating Environment (Wind/rainfall)	Beaufort LEVEL 5
Landing Speed (m/s)	5M/s		



HJ-Firefly-(



Remote Controller



TEL: +886-03-5734260 Mobile: +886935811226(Tony Chang)

Mail: dalin@arklab.tw Web: www.hjuavs.com



No. 326, Sec. 2, Gongdao 5th Rd., East Dist., Hsinchu City 300043, Taiwan (R.O.C.)



HJ-IR640 (EO/IR)-

length	35 x40 x40 mm
Weight	380 g
Image sensor	Opt:12Mpx 1.55um/60fps IR: 640*512(17uM/30fps)
Temperature precision	<40mK(F1.0/300k/30Hz)
Focal length EFL(mm)	IR:19mm OPT: 15.4mm
Aperture	IR:F 1.0 OPT: F 1.6
Interface & Power	
Output interface	MIPI(LVDS) / RJ-45/USB
Power	DC 3.3~3.6V (12VDC)
Output format	RTSP/RTMP@ H.265
Environment	
Environment temperature	-30~85 (C)
Waterproof and dustproof	IP54
Edge AI	
Ai computing power	15 TOPs

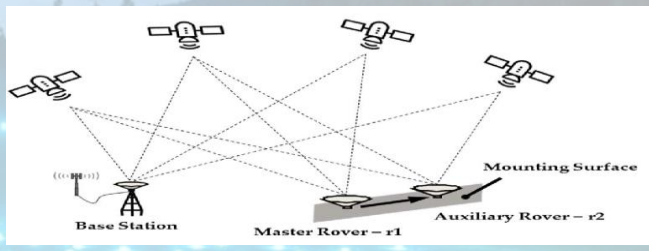


EO/IR Proformas During Night

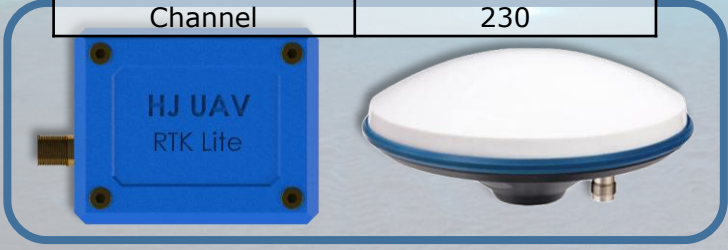
Length	42.1x34x14 mm
Environment temperature	-20°C~40°C
Positioning accuracy	Horizontal:7 mm Vertical:14 mm
Error range	0.5° RMS
RTCM packet format	RTCM3.x, SkyTraq
Receive signal	GPS/QZSS L1/L2C Galileo E1/E5b GLONASS L1/L2
Update rate	1/2/4/5/8/10 Hz
Weight	20 g
Input voltage	UART 5V
Input format	GH 1.25 6 PIN UART
Output format	NMEA 0183
Channel	230



誤差量測及調適介面



RTK 定位功能說明



HJ-RTK PRO kit (GNSS)



USE CASE: 高壓電塔清洗及消防山域搜索



TEL: +886-03-5734260 Mobile: +886935811226(Tony Chang)
Mail: dalin@arklab.tw Web: www.hjuavs.com

No. 326, Sec. 2, Gongdao 5th Rd., East Dist., Hsinchu City 300043, Taiwan (R.O.C.)





SPECIFICATIONS

Display			
Bonding	Optical Bonding for Sunlight Viewability	Resolution	1920x1080
Size	14 inches	Contrast Ratio	800:1
Panel Brightness	800 nits	View Angles	85,85,85,85
Type	Projected Capacitive Multi Touch		
System Specification			
Processor	Intel® Core™ i5-1135G7 @ 2.40GHz, up to 4.20GHz 8M Cache; 4 cores	Memory	4GB DDR4 SDRAM 8GB DDR4 SDRAM (Optional) 16GB DDR4 SDRAM (Optional) 32GB DDR4 SDRAM (Optional)
Storage	128GB SSD Additional storage available with micro SDXC card slot 256GB SSD (Optional) 512GB SSD (Optional) 1TB SSD (Optional) 2TB SSD (Optional)	Ethernet controller	1 x RJ45-10/100/1000 Mbps LAN
Security	Trusted Platform Module (TPM) 2.0 Kensington Lock	Operating System	Windows 10 IoT Enterprise (64 bit)
WLAN	Support	BT	Support
WWAN	4G LTE (Optional)	GNSS	GPS, GLONASS (Optional)
RFID	HF RFID (Optional)	Sensors	Light sensor/ g-sensor / Gyro
Smart Card Reader	Smart Card Reader Comply with ISO7816-1,2,3 T=1 and T=0 protocol (Optional)		
Camera			
Front Camera	2MP Front Camera	Rear Camera	8MP Rear Camera with auto-focus and LED light
Mechanical			
Dimension	341.91 x 224.87 x 25.4 mm	Weight	1.7 kg
Cooling System	Fan design		
IO Ports			
USB Port	2 x USB 3.0 (Type A), 1 x USB 3.0 (Type C)	SD Card Slot	1 x Micro SDXC slot
SIM Card Slot	1 x Nano SIM card slot	Video	1 x Micro HDMI (Optional)

TEL: +886-03-5734260 Mobile: +886935811226(Tony Chang)
Mail: dalin@arklab.tw Web: www.hjuavs.com

No. 326, Sec. 2, Gongdao 5th Rd., East Dist., Hsinchu City 300043, Taiwan (R.O.C.)





NODE2X5W-5RM



SOL8SDR



POWER (EXT PSU)

DC input	8V to 18V reverse polarity protected
Power consumption	Up to 20W (RMS) dependent on mode and peripherals, 10W typical Mesh mode

PHYSICAL

Dimensions (excluding protrusions)	128mm (L), 67mm (W), 38mm (D)
Weight	634g

ENVIRONMENT

Standard	Designed to meet MIL-STD-810G
Temperature range	-20°C to +60°C
Cooling	Passive
Sealing	IP68

FREQUENCY

032047	320-470MHz
114150	1.14-1.50GHz
167235	1.67-2.35GHz
198270	1.98-2.70GHz
440500	4.40-5.00GHz

AUDIO

Talkback audio input	High gain microphone stereo pair or talkback
Digital audio input	SD/HD-SDI digital stereo pair
Sample rate	16kHz-48kHz
Coding modes	4 channels stereo or mono MPEG Audio Layer 1 64-448kbps MPEG Audio Layer 2 32-384kbps MPEG Audio Layer 3 8-256kbps

STORE AND FORWARD OPTIONS

Storage format	SD card interface (Secure Digital card) - not user accessible
Record options	Continuous or triggered (Milestone)
Files download	From web browser interface/RTSP
Video and audio clip size	30 seconds

ENCRYPTION

DES	Standard
AES128/AES256	Licensed (subject to export control)

OPEN AUDIO COMMS CHANNEL (SHARED VOICED CHANNEL)

Multi-user audio comms channel	Interface microphone level/headphone output
Compression	G726 32kbit audio 8kHz sampling and mute

GPS

Built in GPS receiver	Garmin GPS-15xH-W
-----------------------	-------------------



TEL: +886-03-5734260 Mobile: +886935811226(Tony Chang)
Mail: dalin@arklab.tw Web: www.hjuavs.com



No. 326, Sec. 2, Gongdao 5th Rd., East Dist., Hsinchu City 300043, Taiwan (R.O.C.)

HJUAV USE CASE



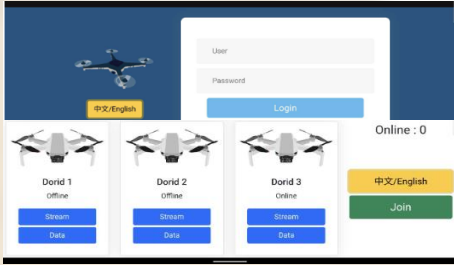
無人機巡檢中心暨聯合防治平台
Topology-FundFarm
無人機智慧農場巡檢系統



USE CASE 2 - 防救災
靠資訊掌握風險
用科技搶救人命
防救災無人機
監控派遣平台
Topology-UCC
航見科技
HANG JIAN TECHNOLOGY



無人機AI解決方案
(Cloud/Edge)
Topology-AI



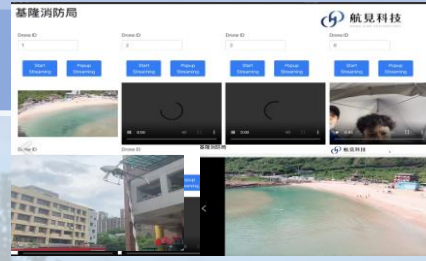
雲端無人機管理APP
Topology-UTM



聯網無人機導控站(Windows)
Topology-GCS



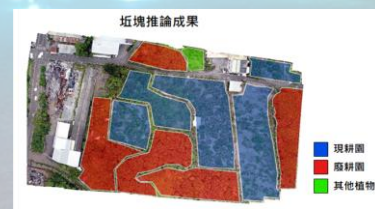
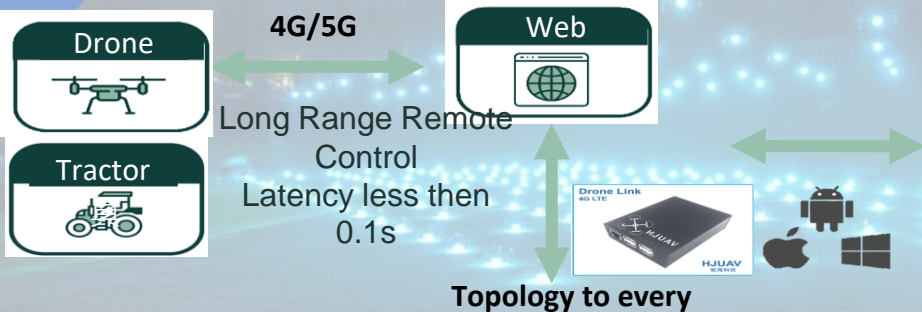
3D Model



Disaster Relief



Utility Inspection



AI monitoring



TEL: +886-03-5734260 Mobile: +886935811226(Tony Chang)
Mail: dalin@arklab.tw Web: www.hjuavs.com
No. 326, Sec. 2, Gongdao 5th Rd., East Dist., Hsinchu City 300043, Taiwan (R.O.C.)

