



GX-GeoShare

Your Own Digital Twin & Map Data Platform

GEOXPERT

Made by

V0.1_np

Table of Contents

1. About Us
2. Introduction
3. Feature
 - a. Highly integrated
 - b. Powerful analysis and display
 - c. Easily manage and collaborate

About Us

Company Profile

GeoXpert is an information services team specializing in geospatial technology and data transformation. We have over 10 years of experience in aerial survey, geospatial technology and data transformation in Hong Kong and Southeast Asia, we are not only developers, but also users of tools and services and have actually been part of the industry. We understand the needs. With our professional and experienced background, we are committed to bringing solutions that are both efficient and effective across industry value chains so that everyone can benefit from data.

GeoXpert has two main brands, DataXquad image data transformation portal and GX-GeoShare online mapviewer, and we also provide data collection, GIS development and IoT solution development services.

GEOXPERT



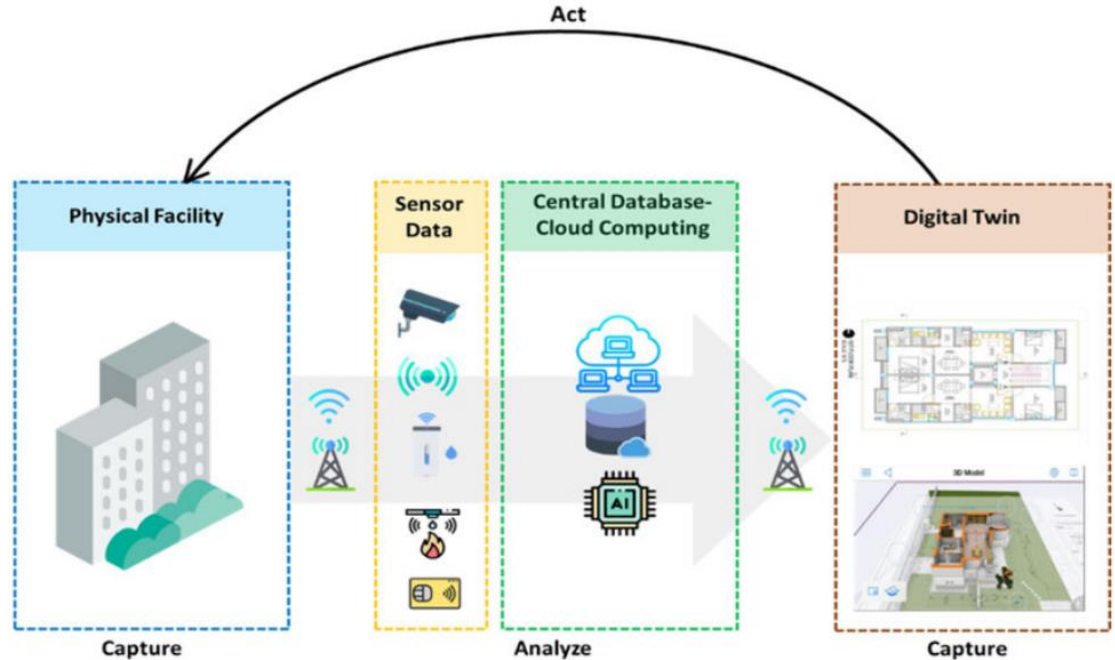
DATA XQUAD

 GX-GeoShare

Introduction

Digital Twin

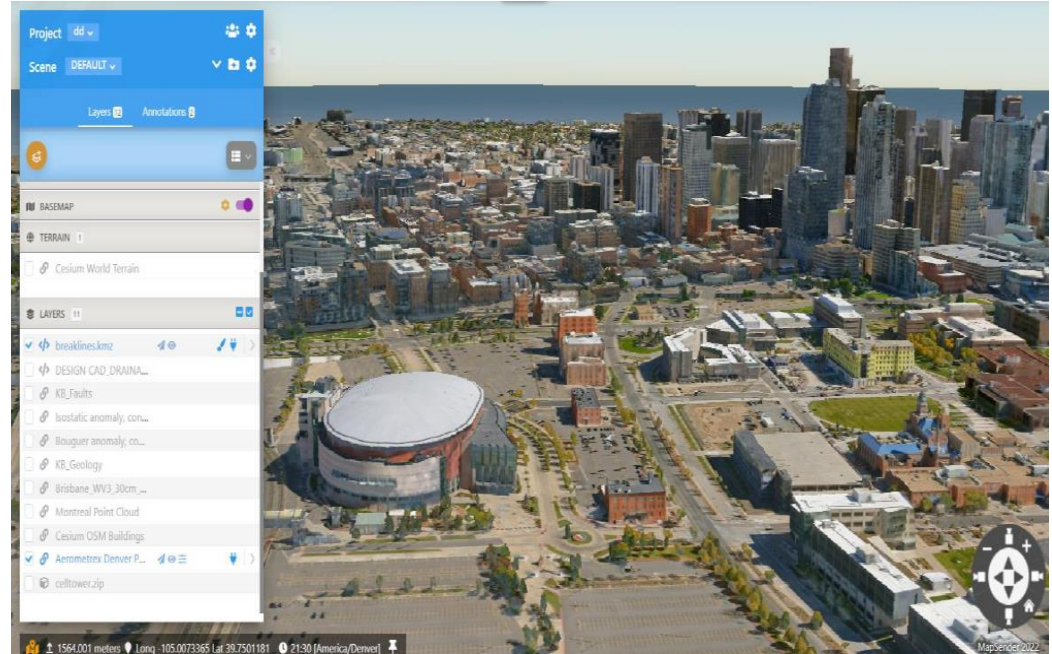
A digital twin is a dynamic virtual copy of a physical asset, process, system or environment that looks like and behaves identically to its real-world counterpart. A digital twin ingests data and replicates processes so you can predict possible performance outcomes and issues that the real-world product might undergo.



Map Data Platform Solution

Instead of just "looking" at the basic 2D graphics, the mapviewer can now easily "collaborate and share" any digital asset.

GX-GeoShare makes it easy for your organization to own an digital twin display platform, enabling you to easily share data, and manage customer assets, maximizing the value of your data.



Feature



Highly integrated

- Support a wide variety of data formats
- Deploy your own white-labelled platform
- Well-documented and secure API engine



Easily manage and collaborate






- Highly flexible user permission management
- Easily share data with just one link.



Powerful analysis and display

- Massive spatial data visualization and delivery in a browser
- Rich data analysis capabilities
- Easy export of test report

What makes us different

	GX	Others
Second Development	White-labeled 	No support
Supported formats	3D, LiDAR, CAD, BIM, IoT etc. 	Only a few 2D, 3D formats
Functions	Measurement, comparison and other analysis function 	Most have only measurement functions
User Management	User access and permission control 	No support
API	Integrate with your system 	No support

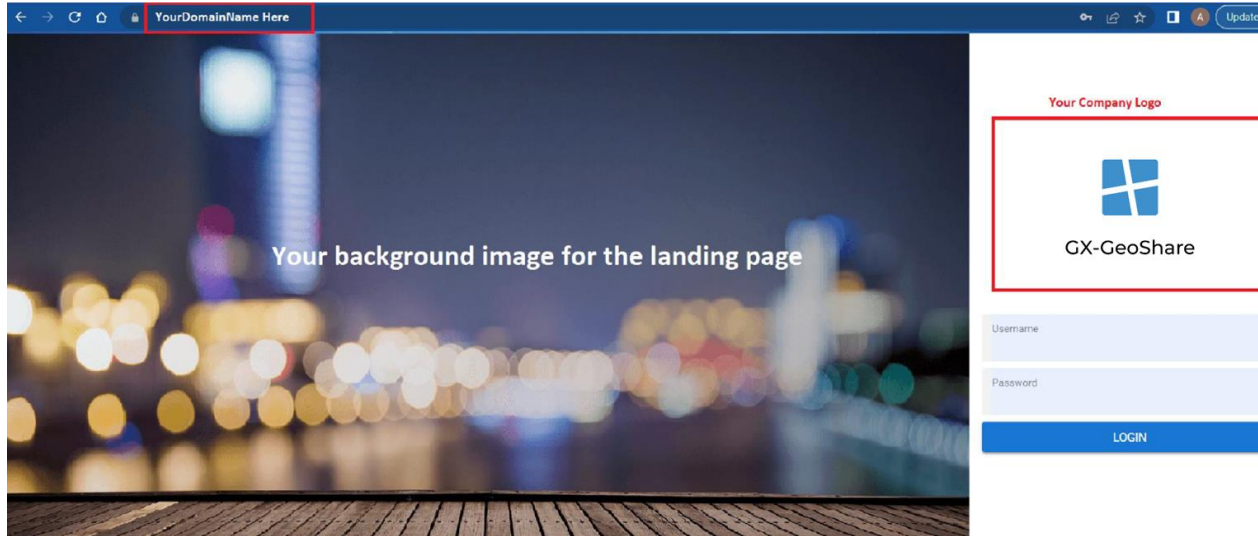
Supported Formats

- Digital terrain models
- 3D scanner, LiDAR and point cloud
- Imagery (orthomosaic, satellite imagery, inspection photos)
- 3D textured mesh and reality models
- CAD drawings and vector data
- BIM 3D models and designs
- External WMS links from opendata or other providers(e.g. Cadastre, utilities, geology, geophysics, etc.)
- Smart cities and Cesium 3D Tiles links from Cesium ion or other providers
- IoT live sensor data



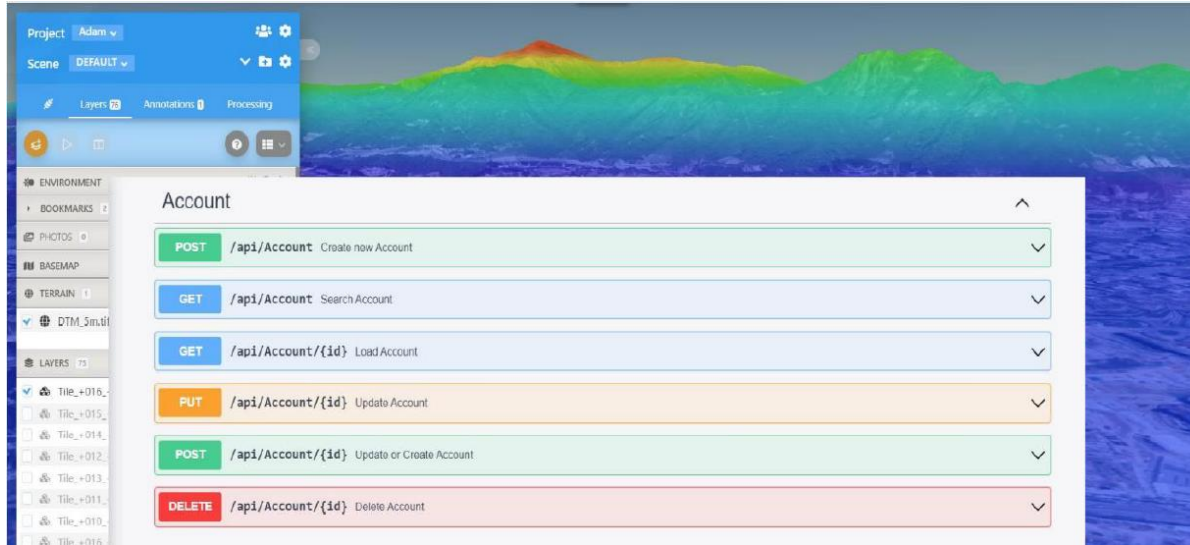
Highly integrated

Make it your own



Quickly deploy, customize and build your own platform and save a couple of years of development time, headaches and cost.

Well-documented API



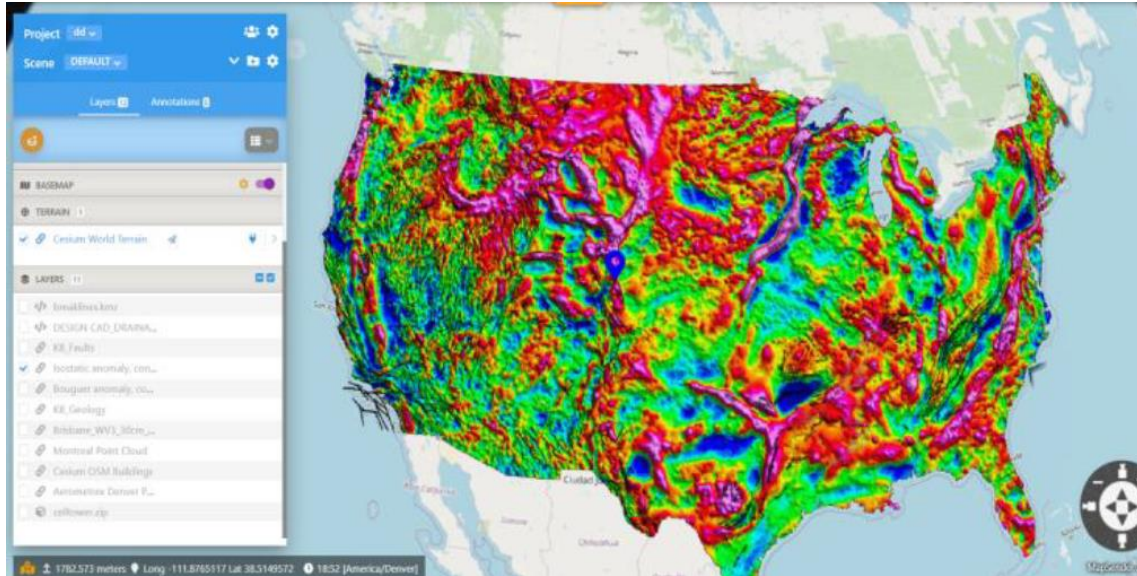
Enable further automation with your existing systems using the well-documented and secure API engine. Stream 3D data to desktop, mobile and other applications.

Multiple data formats supported



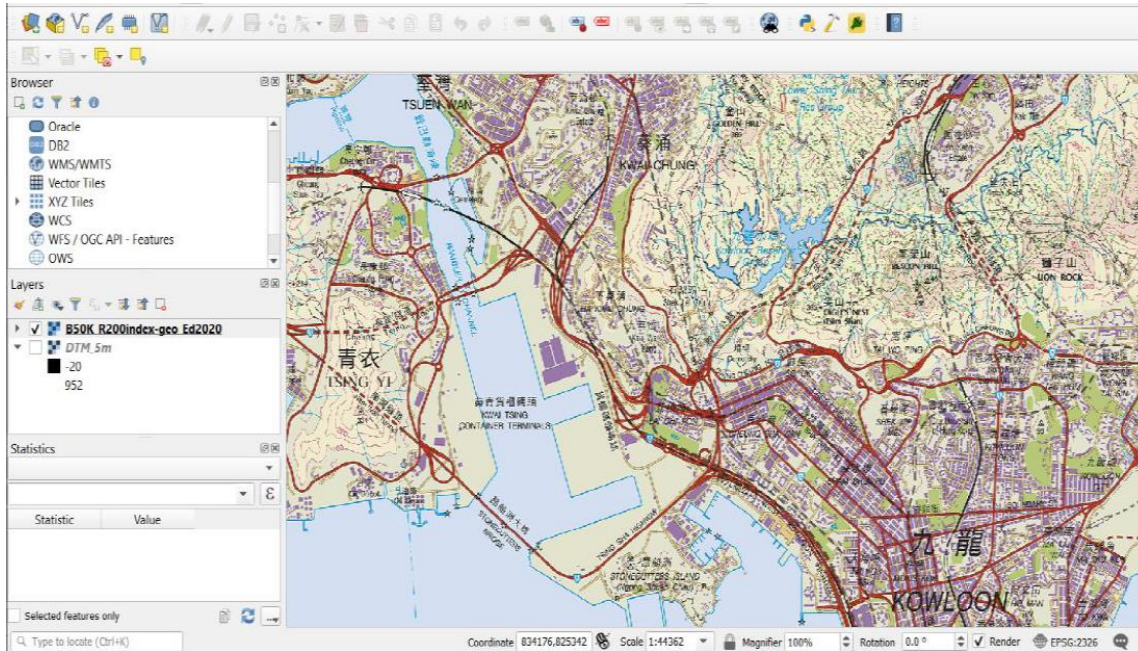
Prepare and visualise your data from anywhere and any format including but not limited to terrain, imagery, pointcloud, GIS, BIM, CAD, IoT sensor data in 3D.

Integration with other resources



Overlaying and data fusion from government and Opendata ,
ArcGIS Online, WMS/WMTS and other resources

Streaming to other applications



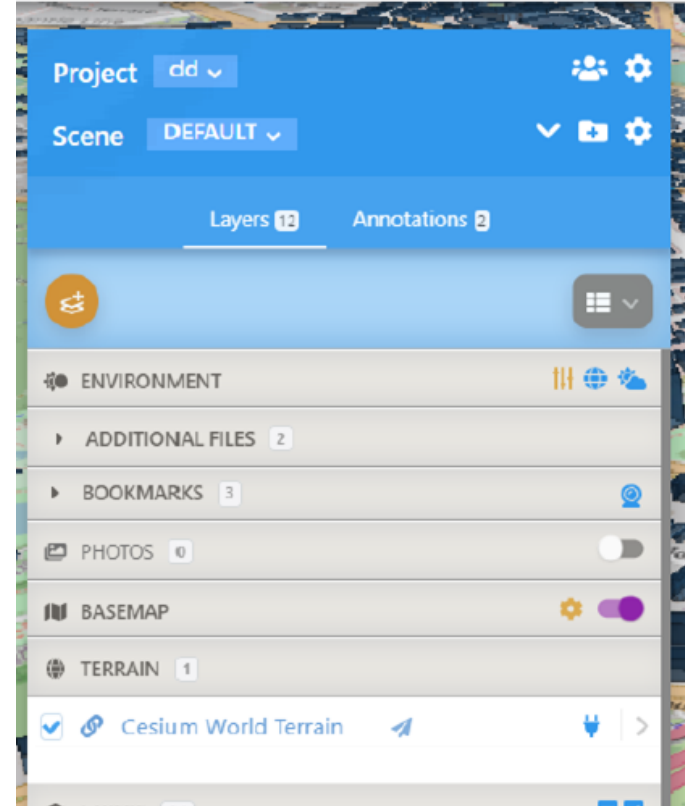
Streaming to other GIS and
desktop applications



Powerful analysis and display

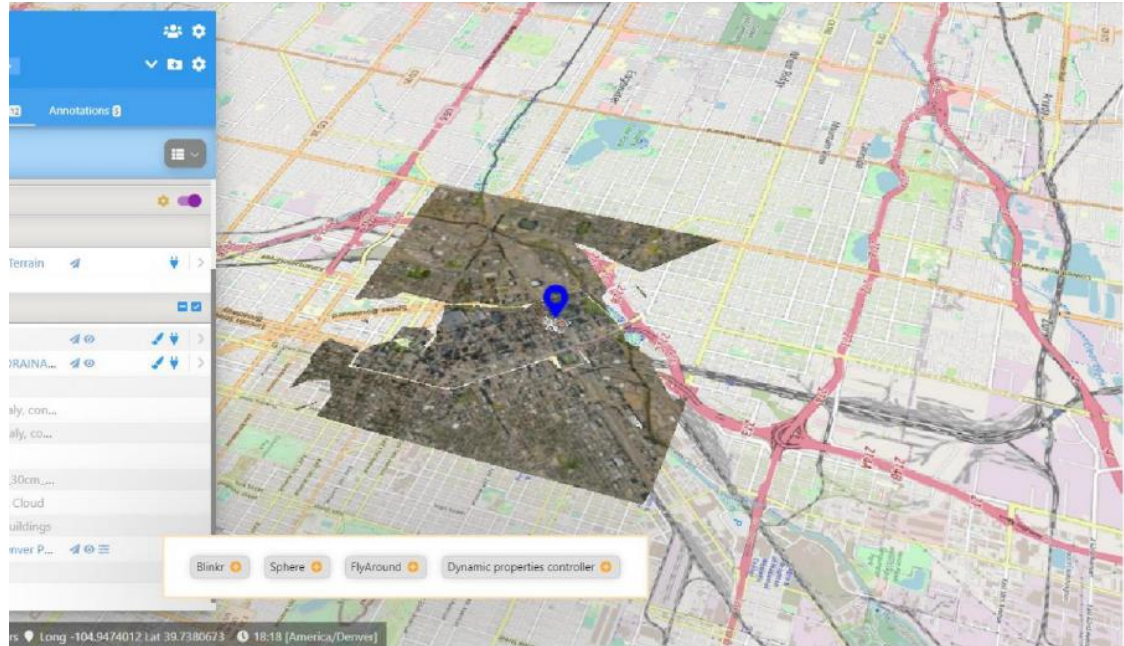
Environment settings

Background map and environmental settings
(shadows, sun angle, underground transparency,
etc.)



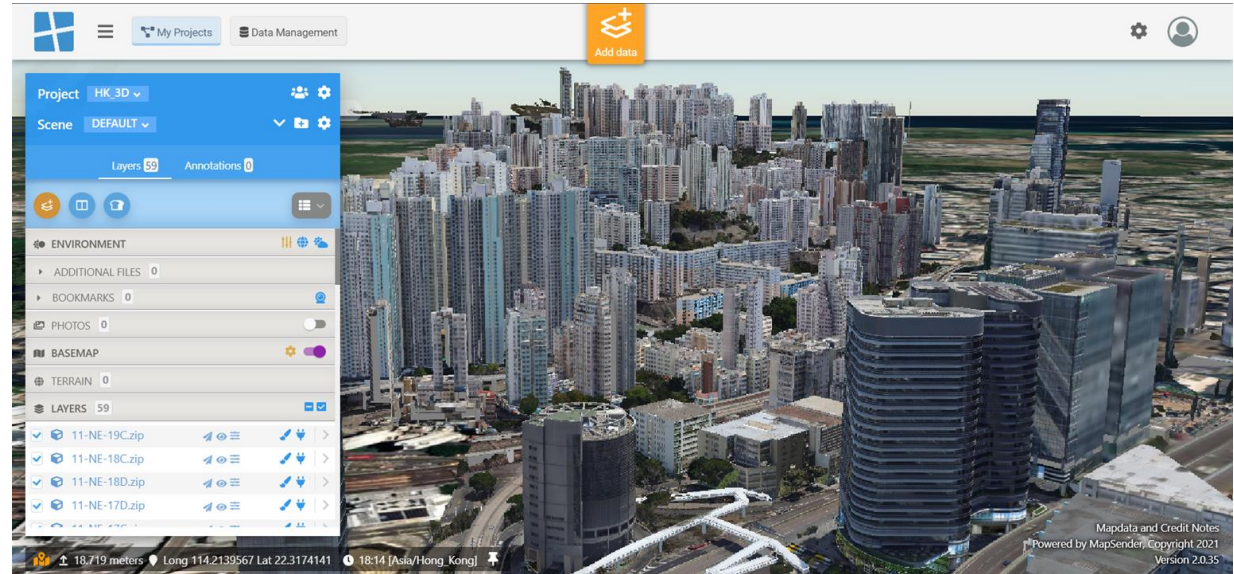
Base Map

Base map selection option from various providers such as open street map, mapbox, bing, google, etc.



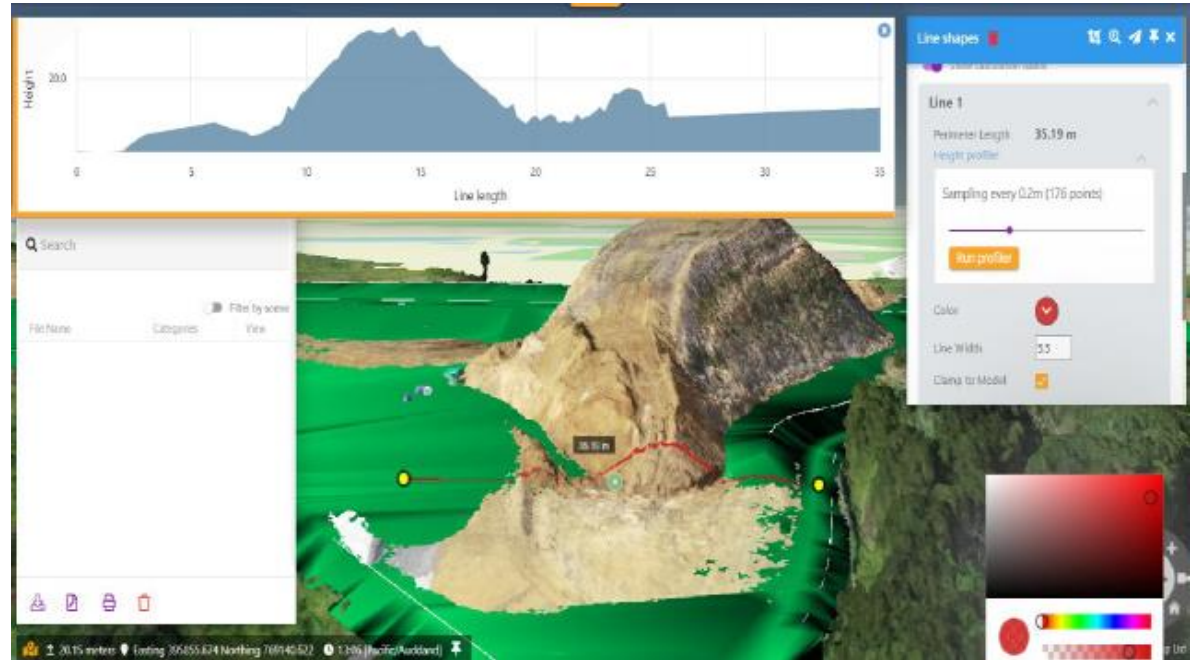
Large-scale data presentation

Large scale smart cities, GIS,
digital twins and WMS overlay for
change detection



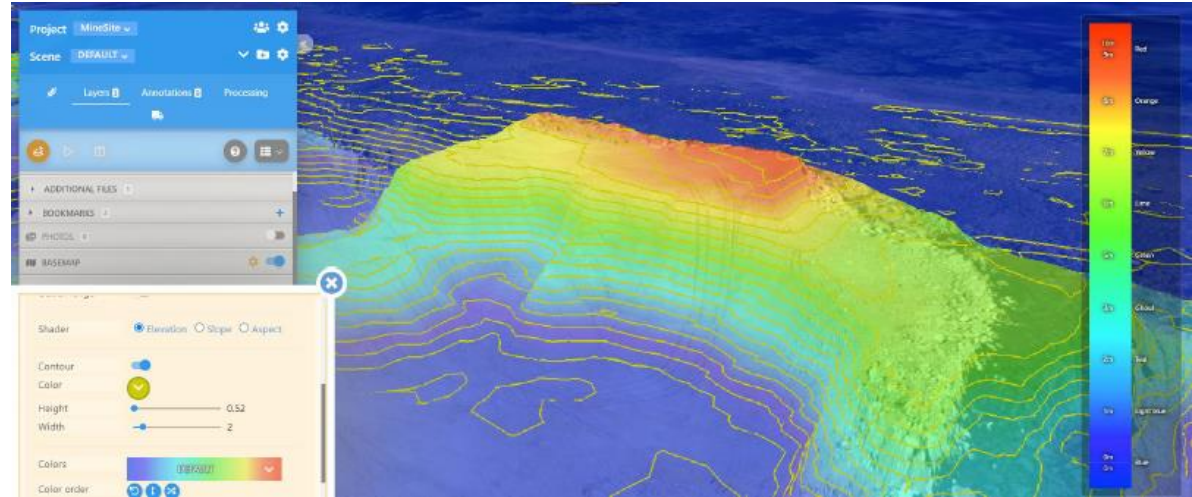
Dynamic contours

Create dynamic contours, slopes and change over time in 3D, measure volumes, extract features and custom analytics. Also can visually compare imagery and 3D models captured at different dates and formats.



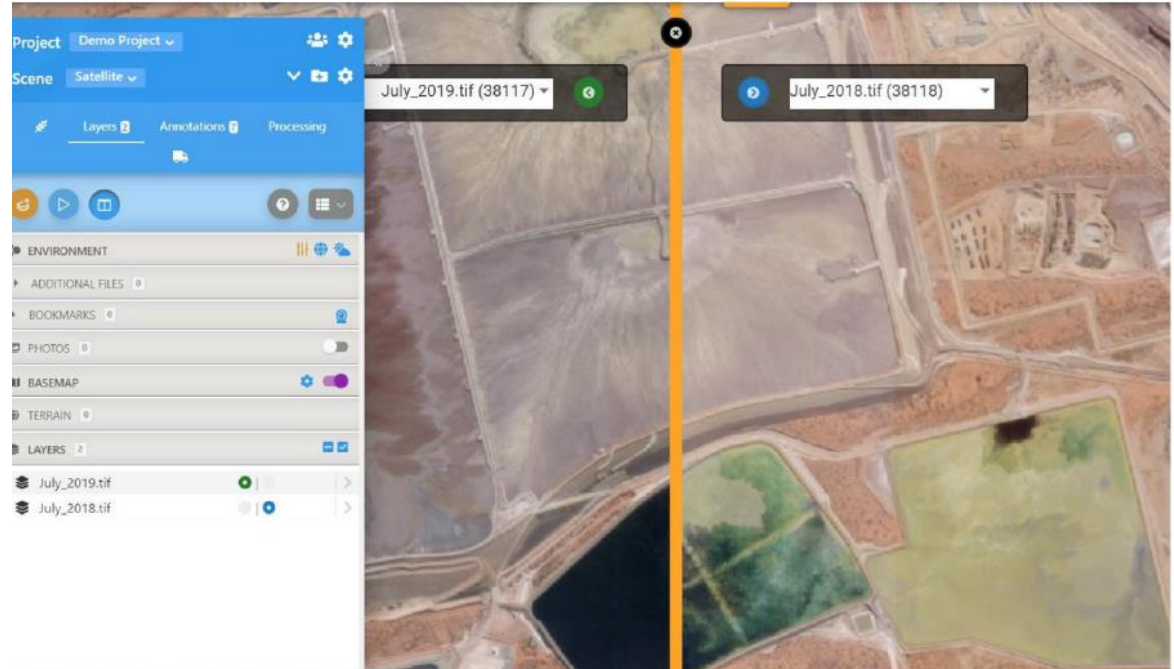
Multiple Analysis Chart

Terrain styling and heatmaps,
dynamic contour lines, slope and
aspect map generation with
legend bar



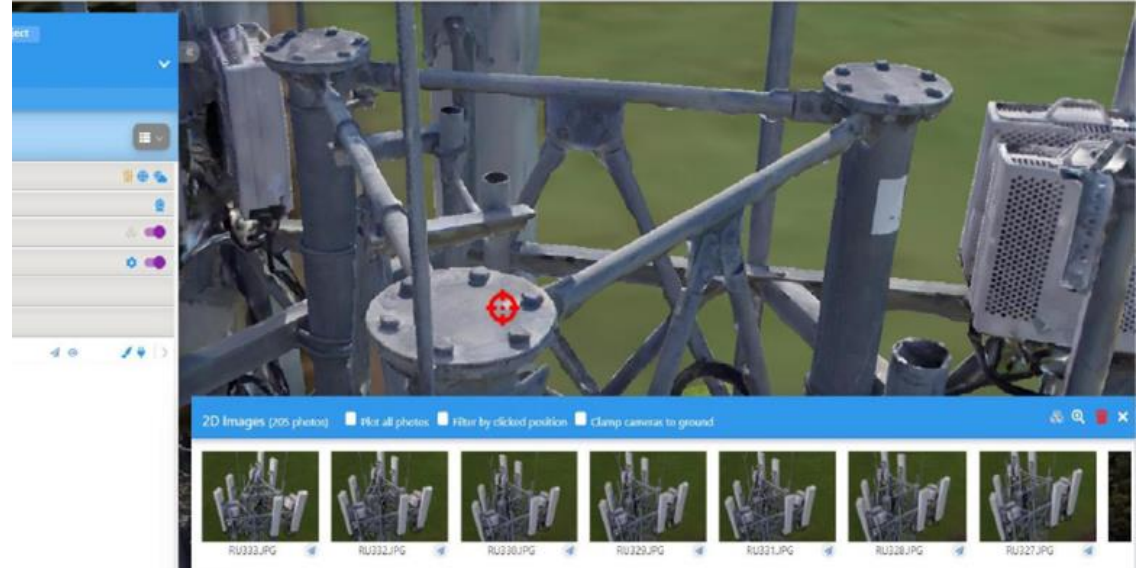
Comparison

Comparing imagery and 3d models with interactive over time slider and animated change detection controller



Detail Photos

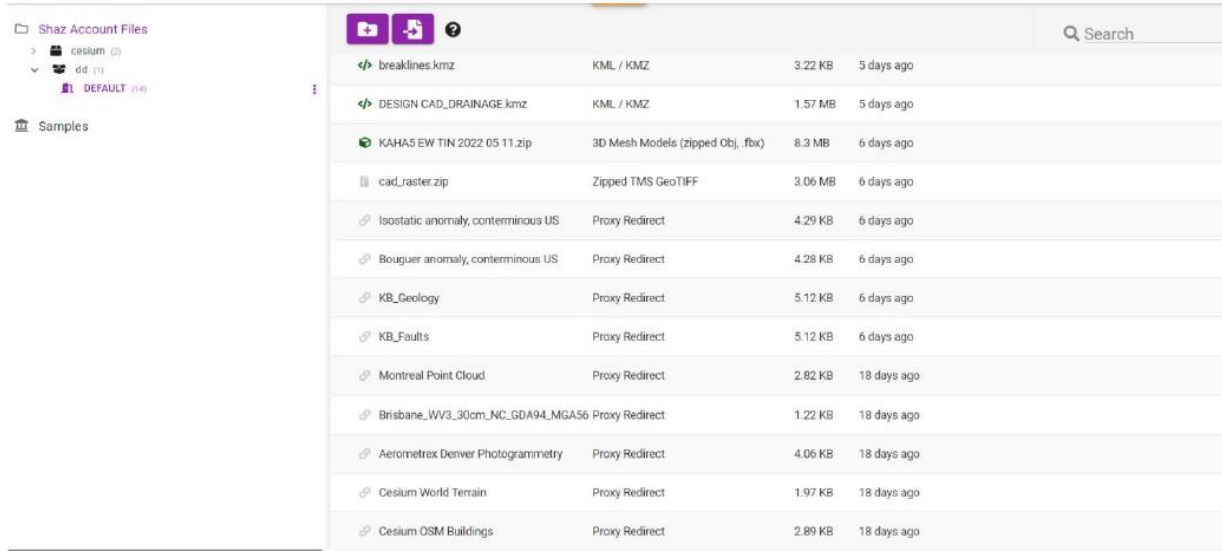
Filtering nearby and visible
photos for the clicked position on
the 3d model





Easily manage and collaborate

Project Management



The screenshot displays the GX-GeoShare file manager interface. On the left, a sidebar shows the file hierarchy: 'Shaz Account Files' (expanded), 'cesium (2)', 'dd (1)', and 'DEFAULT (14)'. Below this is a 'Samples' section. The main area features a table of files with columns for file name, type, size, and time. The table includes icons for file actions (upload, download, help) and a search bar. The files listed are:

File Name	File Type	Size	Time
breaklines.kmz	KML / KMZ	3.22 KB	5 days ago
DESIGN CAD_DRAINAGE.kmz	KML / KMZ	1.57 MB	5 days ago
KAHAS EW TIN 2022 05 11.zip	3D Mesh Models (zipped Obj, .fbx)	8.3 MB	6 days ago
cad_raster.zip	Zipped TMS GeoTIFF	3.06 MB	6 days ago
Isostatic anomaly, conterminous US	Proxy Redirect	4.29 KB	6 days ago
Bouguer anomaly, conterminous US	Proxy Redirect	4.28 KB	6 days ago
KB_Geology	Proxy Redirect	5.12 KB	6 days ago
KB_Faults	Proxy Redirect	5.12 KB	6 days ago
Montreal Point Cloud	Proxy Redirect	2.82 KB	18 days ago
Brisbane_WV3_30cm_NC_GDA94_MGA56	Proxy Redirect	1.22 KB	18 days ago
Aerometrex Denver Photogrammetry	Proxy Redirect	4.06 KB	18 days ago
Cesium World Terrain	Proxy Redirect	1.97 KB	18 days ago
Cesium OSM Buildings	Proxy Redirect	2.89 KB	18 days ago

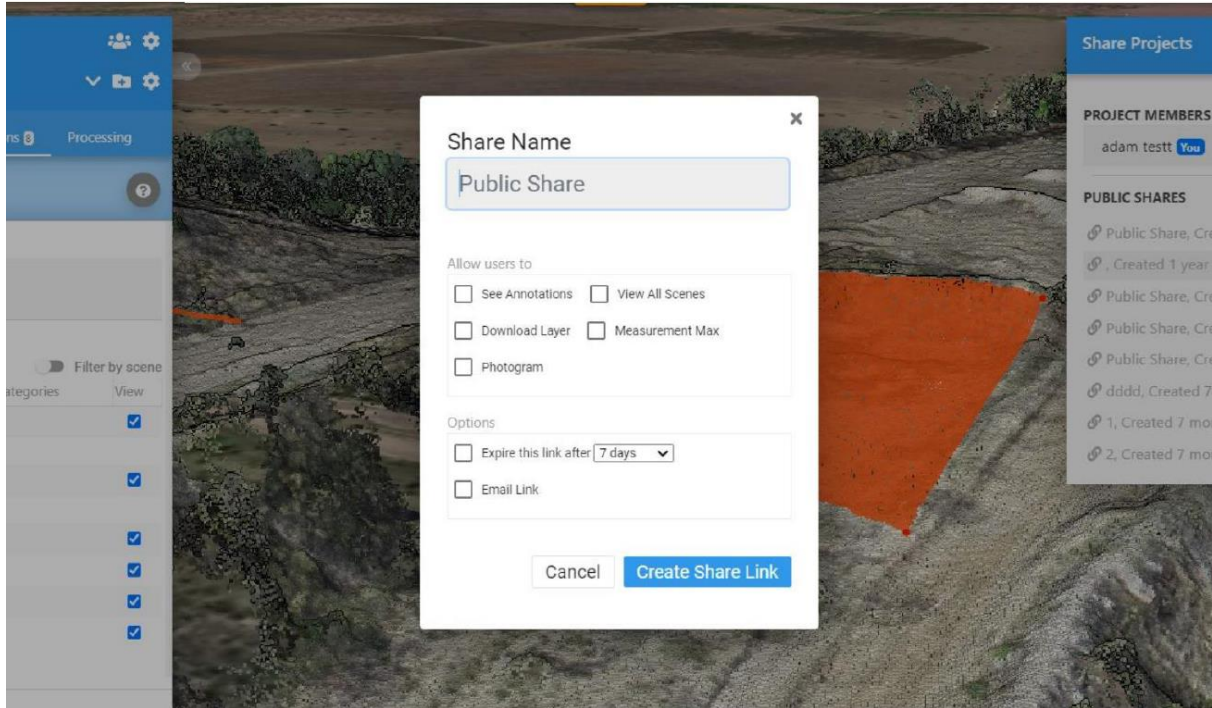
Advanced file manager for
accessing, searching, sorting,
creating data and folders,
renaming, deleting uploading
and downloading

Adding custom metadata



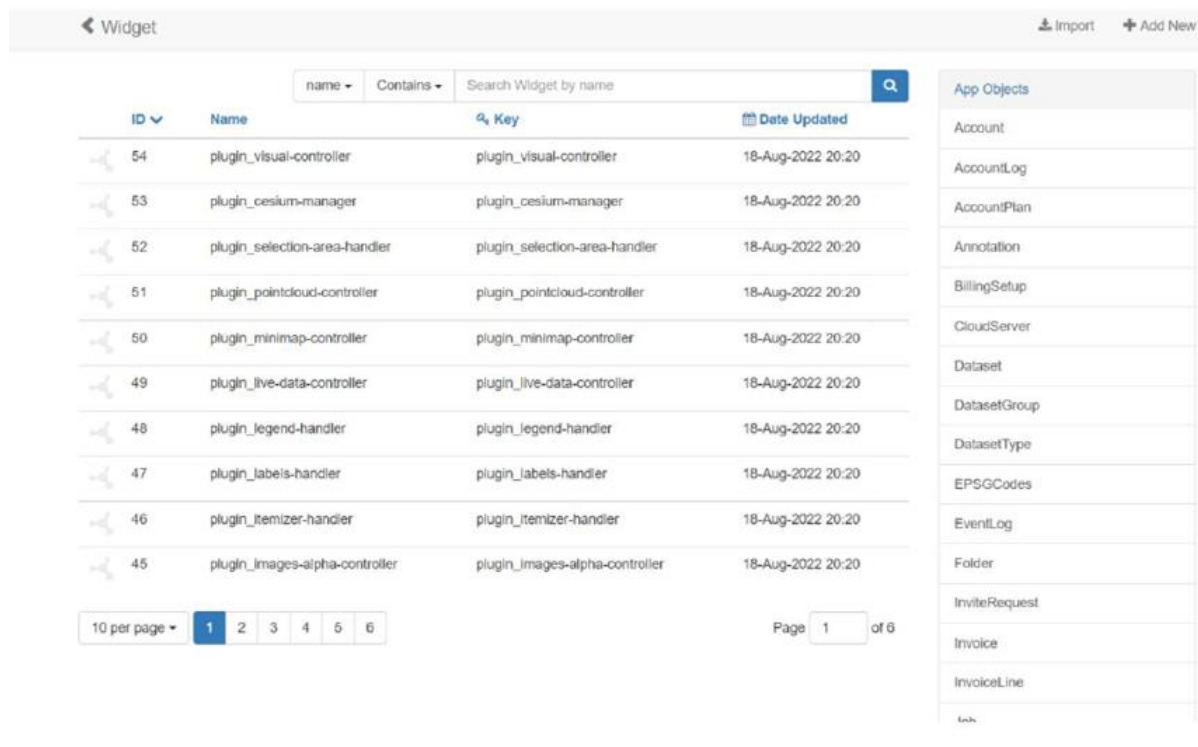
Tagging on 3D model, classifying, styling, adding custom metadata and external links, creating clipped snapshots, and generating reports

Share with a link



Creating secured shared links, inviting and adding users and clients. Enabling controlled access by users and clients for specific projects

Widgets and access management



Widget

Import Add New

name Contains Search Widget by name

ID	Name	Key	Date Updated
54	plugin_visual-controller	plugin_visual-controller	18-Aug-2022 20:20
53	plugin_cesium-manager	plugin_cesium-manager	18-Aug-2022 20:20
52	plugin_selection-area-handler	plugin_selection-area-handler	18-Aug-2022 20:20
51	plugin_pointcloud-controller	plugin_pointcloud-controller	18-Aug-2022 20:20
50	plugin_minimap-controller	plugin_minimap-controller	18-Aug-2022 20:20
49	plugin_live-data-controller	plugin_live-data-controller	18-Aug-2022 20:20
48	plugin_legend-handler	plugin_legend-handler	18-Aug-2022 20:20
47	plugin_labels-handler	plugin_labels-handler	18-Aug-2022 20:20
46	plugin_itemizer-handler	plugin_itemizer-handler	18-Aug-2022 20:20
45	plugin_images-alpha-controller	plugin_images-alpha-controller	18-Aug-2022 20:20

10 per page 1 2 3 4 5 6

Page 1 of 6

App Objects

- Account
- AccountLog
- AccountPlan
- Annotation
- BillingSetup
- CloudServer
- Dataset
- DatasetGroup
- DatasetType
- EPSGCodes
- EventLog
- Folder
- InviteRequest
- Invoice
- InvoiceLine
- ...

Admin dashboard for defining widgets and map controls, creating roles and assigning to each client and users Limiting users plans, generating reports and users activities, connection to external processing resources, etc.

Contact

Kevin Chan

 kevin.chan@geoxpert.com

KY Chan

 kychan@geoxpert.com



THANK YOU

GEOXPERT

V0.1_np