



UAV ESC & FLIGHT CONTROLLER

# RESPONSIVE CONTROL. RELIABLE IN EVERY MISSION.

Advanced ESC and flight controller solutions for UAV applications, designed for precise motor response, resilient integration, and platform-level validation.

## ESC MODULE



RESPONSIVE DRIVE CONTROL



HIGH POWER DENSITY



ROBUST PROTECTION



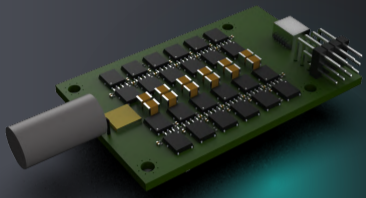
FLEXIBLE INTEGRATION



MISSION DATA READY

### EM080-A06S

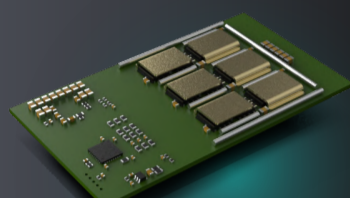
4-in-1 ESC for compact UAV platforms



- 65 (x4) A continuous current
- 3S-6S battery voltage
- Recommended motor KV: 600-1800 KV
- Dimension: 66 x 42 x 8 mm
- Weight without cable: 27g

### ES120-A06S

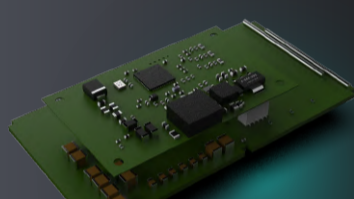
Single rotor ESC



- 100A continuous current
- 3S-6S battery voltage
- Recommended motor KV: 350-650 KV
- Dimension: 65 x 36 x 8 mm
- Weight without cable: 28.5g

### ES120-A14S

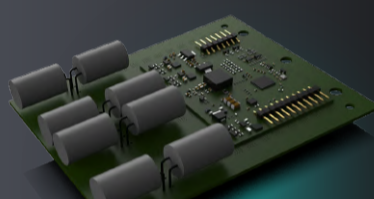
Single rotor ESC for heavier UAV platforms



- 60A continuous current
- 12S-14S battery voltage
- Recommended motor KV: 80-250 KV
- Dimension: 100 x 50 x 23.2 mm
- Weight without cable: 170g

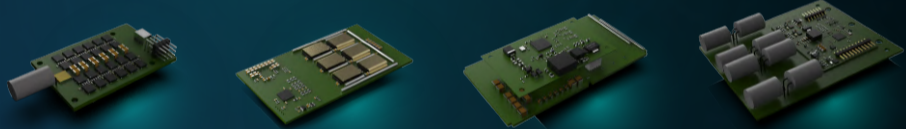
### ES200-A14S

Single rotor ESC for heavy-lift applications



- 100A continuous current
- 200A maximum current (@3s)
- 12S-14S battery voltage
- Recommended propeller: 30"-40"
- Available for MP: June, 2026

## SPECIFICATIONS COMPARISON



Model	EM080-A06S	ES120-A06S	ES120-A14S	ES200-A14S
Type	4 in 1	Single	Single	Single
Continuous Current	65 (x4) A	100A	60A	100A
Maximum Current	80A (x4) (@3s)	120A (@3s)	120A (@3s)	200A (@3s)
Communication	PWM/DShot/CAN	PWM/DShot/CAN	PWM/DShot/CAN	PWM/DShot/CAN
Control Algorithm	Sensorless Trapezoidal	Sensorless Trapezoidal	Sensorless Trapezoidal	Sensorless Trapezoidal
OTA Support	Yes	Yes	Yes	Yes
OTP	Yes	Yes	Yes	Yes
OCP	Yes	Yes	Yes	Yes
OVP	Yes	Yes	Yes	Yes
Weight w/o Cable	27g	28.5g	170g	170g
BEC Output	5V/0.6A	5V/7A	N/A	N/A
Dimension (WxLxH)	66 x 42 x 8 mm	65 x 36 x 8 mm	100 x 50 x 23.2 mm	100 x 50 x 23.2 mm
Recommended Motor KV	600-1800 KV	350-650 KV	80-250KV	60-120KV
Recommended Propeller	4"-13"	7"-13"	15"-36"	30"-40"
Battery Voltage	3S-6S (10V-26V)	3S-6S (10V-26V)	12S-14S (32V-60V)	12S-14S (32V-60V)
Estimated Thrust/Rotor	0.3-1.5 kgf	0.8-2 kgf	6-24 kgf	20-40 kgf

## FLIGHT CONTROLLER



HIGH PERFORMANCE MCU



SENSOR REDUNDANCY



OPEN FIRMWARE



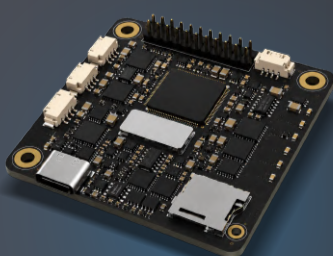
RICH INTERFACES



EXPANDABLE DESIGN

### HYENA FU3B2-A08

Engineered for fixed-wing, quadrotor and hexarotor UAV platforms.



- Modular Carrier/Daughter Board Design
- External Companion Computer Support
- Built-in IMU Temperature Control

System	MCU	STM32H757
	Firmware	ArduPilot
	Input Voltage	5V
Sensors	IMU	Triple Redundant IMU
	IMU Models	ICM-42686 (x2), ICM-42688P (x1)
	Barometer	Dual Barometers (MS51, BMP581)
	Compass	IST8308 (Integrated)
Connectivity	UART	5 Ports
	USB	1 x Type-C
	CAN Support	1 x CAN FD
Reliability	PWM Output	8 Channels
	Power Input	Dual Redundant Power Inputs
	Storage	Dual Storage (MicroSD + Flash)
Peripheral Software	IMU Control	Built-in IMU Temperature Control System
	Buzzer	Supported (Dedicated Output)
	OSD	N/A (External Support)
	Hardware Design	Modular Carrier/Daughter Board Design
	GCS Support	Mission Planner / QGroundControl (QGC)

Let's discuss your UAV platform requirements.

Scan to connect with our technical team.

