

- 1/2.8" 8MP Sensor
- 3840*2160@ 25/30fps
- 4.8~48mm 10x zoom for surveillance
- AI ISP with enhanced low light performance
- Support 8MP IP video output
- Support SONY VISCA Protocol and PELCO Protocol



1.Key Features

Superior hardware brings new visual heights

Equipped with a 1/2.8" surface, high sensitivity sensor with F1.7 super large aperture 10x optical zoom lens (f: 4.8~48mm), combined with a powerful AI master chip, it always delivers unrivaled image quality day and night, regardless of distance.

DAY & NIGHT (ICR)

The ICR will automatically engage depending on the ambient light, allowing the camera to be effective in day&night environment.

Privacy mask Function

The privacy zone function makes it possible to make specific areas of the scene from view.

Digital Image Stabilizer (DIS)

The Image Stabilizer function reduces image blurring caused by, for example, vibration, which allows you to obtain images without much blurring.

AI-ISP Enhanced Image Processing

Adopting a large target surface sensor and ultra-large aperture lens design to enhance light throughput, combined with AI-ISP's ultra-light-sensitive noise reduction technology, the low-light performance is improved by 5 times to achieve full-color image output in low-light environments.

WDR (Wide Dynamic Range)

WDR, more effectively than previous models, by applying an optimum fusion ratio when combining the high speed. shutter used in bright areas and the low-speed shutter used in dark areas. - Dual shutter image fusion (Max. 90dB) - Line by Line WDR (Max. 120dB)

DNR (Digital Noise Reduction, 2D+3D)

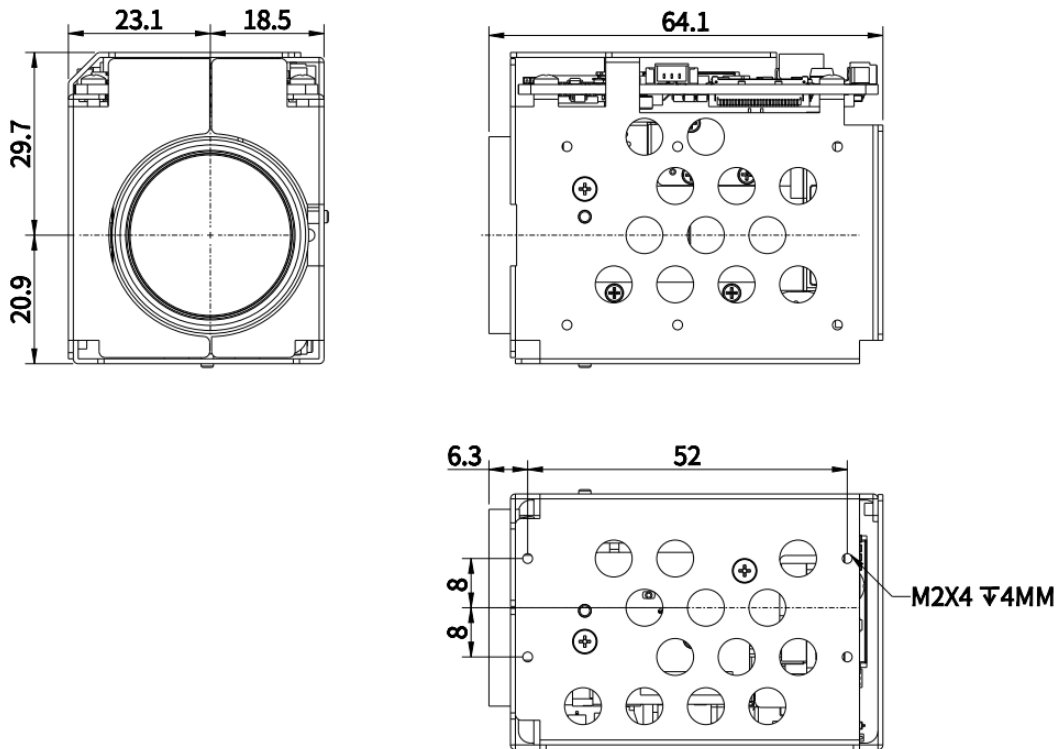
The DNR technology eliminates noise thus generating a distinct and clear image. This camera DNR function utilizes both an adaptive 2D filter reducing noise in the brightness of the image and an adaptive 3D filter reducing noise caused by movement.

2.Specifications

Model	MV-8ZL10EN1
Image sensor	1 / 2.8" Sony Starvis CMOS Image Sensor
Resolution	IP: 2160p30(25)fps / MIPI: 1080p 30(25)fps
Min. Illumination	Color: 0.05Lux/F1.5
Video Encoding	H.265/H.264/MJPEG
S/N Ratio	≥ 55dB (AGC Off)
LENS	
Lens Type	10X Day & Night Zoom Lens
Zoom Ratio	Optical 10X , Digital 4X ZOOM
Focal Length	4.8 ~ 48mm
Aperture Ratio	F1.7(wide) ~ 3.0(tele)
Angle of View(H,V,D)	3840*2160: H: 60.2° ~ 6.6°; V: 36.1° ~ 3.7°; D: 67.2° ~ 7.6°
Function	
AF Mode	Auto / One Push / Manual
Min. Distance	1m ~ 5m (Wide ~ Tele)
Digital Zoom	Off / 1X-4X
Exposure	
Exposure	Auto / Iris. Priority / Shut. Priority / Manual
Gain Control(AGC)	0 ~ 100 steps
Shutter Speed	1/3 ~ 1/30000 sec
Iris	0 ~ 100 steps
Flickerless	Off / On
Brightness	Support
WDR	OFF / WDR
BLC	Support
Day&Night	Support
Exposure Compensation	Support
White Balance	
White Balance	Auto/Manual/Indoor/Outdoor/ATW/Sodium Lamp/Natural/Street Lamp/One Push
Red Gain	0 ~ 100 steps(Manual mode only)
Blue Gain	0 ~ 100 steps(Manual mode only)
Chroma	0 ~ 100 steps
Image	
HLC	Off / On
DNR	2D/3D, Support AI ISP
Mirror&FLIP	Support
Sharpness	0 ~ 100 steps
Defog	Support
Freeze	Off / On
Gamma	0 ~ 100 steps
Intelligence	
Privacy Mask	Max. 24 Areas

Digital Image Stabilizer	Electronical Image Stabilization (EIS),Off / On
Special Function	
Audio	Support AAC (8/16kHz), MP2L2(16kHz)
API	ONVIF (Profile S, Profile G, Profile T), HTTP API, SDK, GB28181
Communication	TTL3.3V, Compatible with VISCA protocols
Electrical	
Power Source	DC +9 ~ +12V
Power Consumption	Avg: 4.5W, Max: 5.1W
Key interface	
Power&Signal interface	DC in\10M&100M Ethernet\Communication UART
General	
Storage Temperature	-40°C ~ +70°C、20 % to 95 % RH
Operating Temperature	-30°C ~ +60°C、20 % to 80 % RH
Dimensions(mm)	64.1 * 41.6 * 50.6(L×W×H)
Weight	146g

3.Drawing



4. Ordering Information

Model No.	Description
MV-8ZL10EN1	8MP 10X ZOOM IP CAMERA MODULE