

# eBee

## VISION



Low acoustic signature



Low specular reflection

### Real-time situational awareness UAS

Get HD live video insights into rapidly-changing environments, even in GNSS-denied conditions. Ensure the success of your Intelligence, Surveillance, and Reconnaissance (ISR) missions. eBee VISION can be easily carried, hand-launched and operated by a single pilot.

Light weight  
**3.5 lbs / 1.6 kg**

Deployment  
**3 min**

Flight time  
**Up to 90 min**

Wireless range  
**Up to 12 mi / 20 km**

Cyber-secure  
**AES-256 encryption**



RGB camera with 32x zoom



Thermal camera with 5x zoom

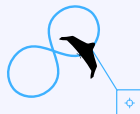
### Detect, track and geo-locate

Simultaneously capture, view and record HD video and imagery.



#### Flight plan

Define a flight plan and seamlessly adapt it during the flight.



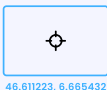
#### Observation mode

Maintain observation from a safe distance.



#### Scouting mode

Explore and track moving targets.



#### Cursor-on-Target

Locate targets using image coordinates.



#### Manual flight

Control the drone for your specific flight maneuvers.



## Drone specifications

Wingspan	47.2 in / 120 cm
Material	Expanded Polypropylene (EPP)
Weight	3.5 lbs / 1.6 kg
Transport case	Backpack and hardcase

## Flight performance

Cruise speed	30 mph to 45 mph (48.6 km/h or 13.5 m/s to 72 km/h or 20 m/s)
Max speed	45 mph (72 km/h or 20 m/s)
Max wind resistance	38 mph (61 km/h or 17 m/s)
Max flight time	90 minutes
Service temperature	14°F, 120°F / -10°C, +49°C



Validated as  
cyber-secure



Radio data link  
encryption AES-256



Drone log file  
suppression



Protected by  
secure element



Encrypted  
SD card

eBee VISION is NDAA-compliant

## Remote controller specifications

Screen	7" sunlight viewable screen with rain mode and glove touch
Video	Continuous HD video feed from RGB and thermal sensors
Battery	5 hours battery life with warm-swap capability

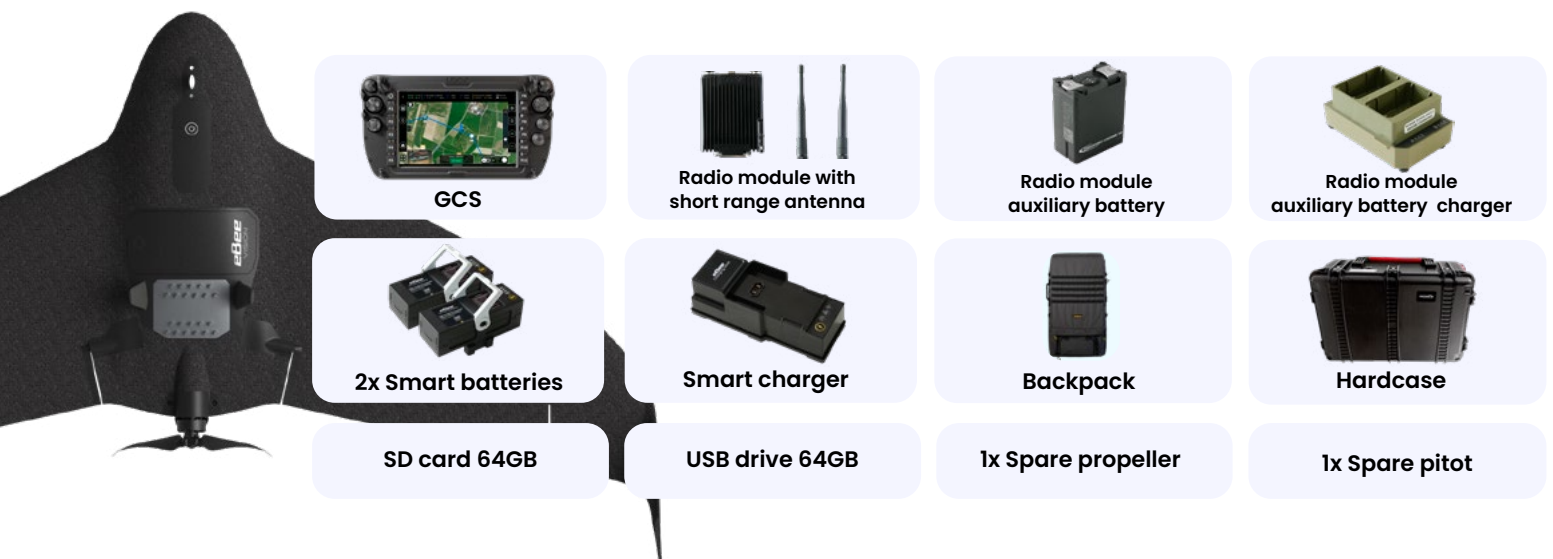
## RGB sensor specifications

Sensor	2 sensors 1/2.4"
Resolution	5344 x 4016
Focal length	4mm / 16mm
Field of view	72° - 45° / 21° - 12°
ISO range	100-3200
Zoom	1x - 4.8x / 4.9 - 32x digital
Video resolution	1920 x 1080
Video format	MP4 (H.264)

## Thermal sensor specifications

Sensor	FLIR BOSON
Resolution	640 x 512
Focal length	18mm
Field of view	24° - 19°
ISO range	-
Zoom	5x digital
Video resolution	1280 x 720
Video format	MP4 (H.264)

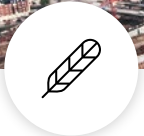
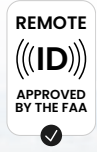
## eBee VISION system includes





# eBee TAC™

Public Safety



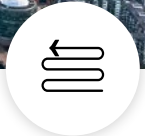
Light weight  
3.5 lbs



Deployment in  
3 minutes



Up to 90 minutes  
flight time



Up to 1,235 ac  
coverage at 400 ft



2D, 3D and thermal  
mapping

## High-accuracy first responders mapping solution

Lightweight fixed-wing drones such as the Blue UAS approved eBee TAC Public Safety have proven capabilities that enable law enforcement, firefighters and emergency services teams to rapidly deploy from a safe distance, capture the scene and make informed decisions on coordinating resources.



Search and rescue



Firefighting and land management



Disaster response



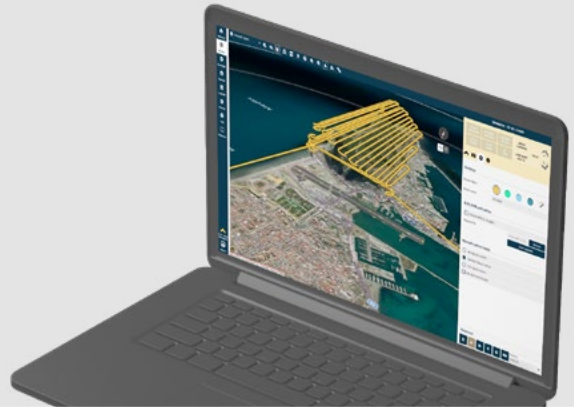
Perimeter surveillance

With its swappable sensor suite, eBee TAC Public Safety allows you to collect data that can be immediately used via the SD card for analysis and decision making.

## eMotion flight planning software

Easy to use desktop ground station to intuitively plan your missions, interact with your drones during the flight and prepare the data for post-processing.

- Offline flight planning
- 3D flight planning
- Multidrone capable
- Optimized mission blocks



Fully operational solution with the capability to integrate with situation awareness tools such as CivTAK

## Drone specifications

Wingspan	45.7 in / 116 cm
Material	Expanded Polypropylene (EPP)
Underbody skin	Curv® Polypropylene thermoplastic composite
Max. take-off weight	3.5 lbs / 1.6 kg
Transport case dimension	29.5x20x13 in / 75x51x33 cm
Motor	Low-noise, brushless, electric
Detachable wing	Yes
Radio link range	1.9 mi (up to 5 mi) 3 km nominal (up to 8 km)
Frequency	2.400 - 2.4835 GHz
Data storage	On-board encrypted SD card



Validated as  
cyber-secure



Radio data link  
encryption AES-256



Encrypted  
SD card

## Flight performance

Cruise speed	11-30 m/s or 25-68 mph (40-110 km/h)
Max. wind resistance	Up to 12.8 m/s or 28.6 mph (46 km/h)
Landing type	Linear landing with Steep Landing technology (16.4 ft / 5 m accuracy in 35° angle cone)
Service temperature	5° to 104°F (-15° to 40°C) Working above 95 °F / 35°C requires to protect the drone from the sun while on the ground
Humidity	Light rain resistance
Ground avoidance	Yes - LiDAR (range 394 ft / 120 m)
Ground resolution	Down to 0.6 in / 1.5 cm
Max. flight time	90 minutes
Mission coverage at 400 ft / 120 m	543 ac to 1,235 ac / 2,2 km² to 5 km²
Linear coverage	Up to 17.2 mi / 27.7 km out and back